

#GreatCareEveryday



Sustainability

Corporate Social
Responsibility

#KeepingLifeHealthy

e-Mail: csr@greatcareinternational.com

[@GreatCareInternational](#)

www.greatcareinternational.com



Why CSR Matters to Us

CSR, Corporate Social Responsibility



85%

Employee Engagement

➤ Social Responsibility

We are committed to uplifting communities by addressing social challenges through impactful, inclusive, and responsible initiatives.

➤ Sustainable Growth

CSR supports our long-term vision by integrating environmental care, ethical operations, and social impact into our business strategy.

➤ Brand Trust

Consistent CSR efforts enhance brand credibility, attract conscious consumers, and reinforce public trust in our values and mission.

➤ Employee Engagement

CSR involvement empowers employees, fostering a strong sense of purpose, belonging, and motivation to contribute beyond daily roles.

Problem / Social Issue

CSR, Corporate Social Responsibility

→ Environmental Degradation

Ecosystem damage increases due to pollution, deforestation, and poor waste management, endangering nature and future generations.

→ Social Inequality

Unequal access to education, healthcare, and income opportunities deepens poverty and limits social mobility across communities.

→ Youth Unemployment

Lack of job opportunities and skill development prevents young people from contributing meaningfully to economic growth.

→ Climate Change Impact

Extreme weather and rising temperatures disrupt livelihoods, agriculture, and infrastructure, especially in vulnerable regions.



Biodiversity
Loss



01

Extreme Weather

Storms and floods increasingly threaten human settlements.

02

Food Insecurity

Climate change reduces yields, increasing global hunger.

The Program Objectives

CSR, Corporate Social Responsibility



50%

Achieve 50% renewable energy usage across all operations by 2026.

03

Water Scarcity

About Droughts limit clean water for many communities.

04

Health

About Heatwaves and diseases pose growing health risks.

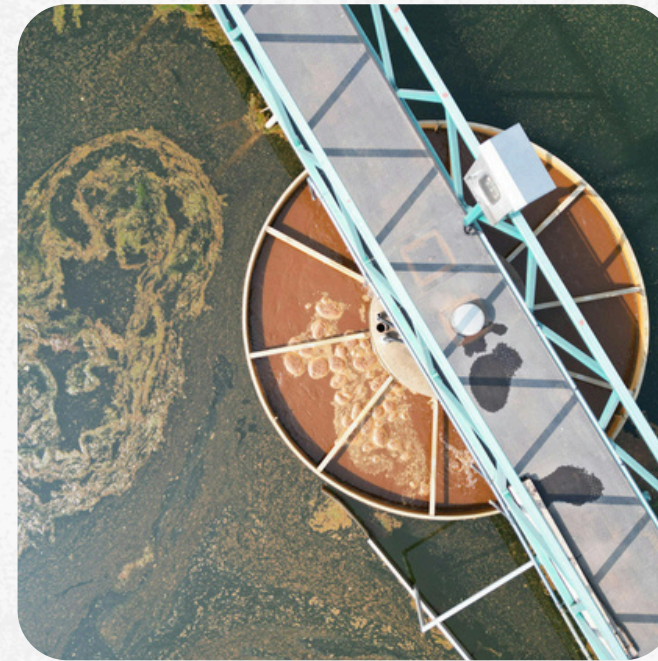
05

Ecosystem

Rising temperatures destroy habitats and threaten biodiversity.

Target Beneficiaries

CSR, Corporate Social Responsibility



Empowered through sustainable infrastructure and green programs.

5000

Local Communities

Empower 5,000 locals through waste and environmental programs.

100%

Employees

Involve all employees in company-wide green initiatives.

3000

Youth and Students

Educate 3,000 youths on sustainability through school campaigns.

500

Small Businesses & Farmers

Support 500 with eco-tools, training, and access.

Program Design

CSR, Corporate Social Responsibility



1. Needs Assessment

Conduct baseline surveys and stakeholder mapping to identify urgent environmental and social priorities across regions and demographics.

2. Capacity Building

Provide targeted training, knowledge sharing, and mentorship to strengthen skills aligned with environmental and economic sustainability.

3. Collaborative Implementation

Partner with NGOs, governments, and communities to ensure inclusive execution and shared ownership of sustainable initiatives.

4. Scalable Model

Develop adaptable program frameworks with potential for expansion, ensuring consistent outcomes and long-term positive impact.

Budget & Funding Needs

CSR, Corporate Social Responsibility



Category	Sub Points	Estimated Cost (IDR)	Notes
Implementation	Training Costs, Operational Logistics, Personnel	P 150,000,000	For program execution across sites
Evaluation	Data Collection, Impact Analysis, Reporting	P 25,000,000	Annual monitoring and reporting
Outreach	Campaign Materials, Stakeholder Engagement, Media Promotion	P 100,000,000	Public awareness and engagement
Total	—	P 275,000,000	Per year estimate



Implementation

- Training Costs
- Operational
- Logistics Personnel



Evaluation

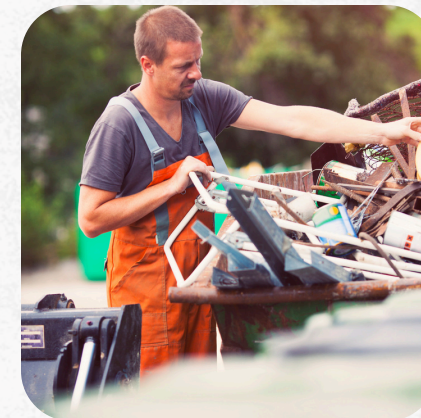
- Data Collection
- Impact Analysis
- Reporting



Outreach

- Campaign Materials
- Stakeholder Engagement
- Media Promotion

Budget & Funding Needs



Budget & Funding Needs

The total estimated annual budget is P 275,000,000, allocated for implementation, evaluation, and outreach activities.

Expected Impact

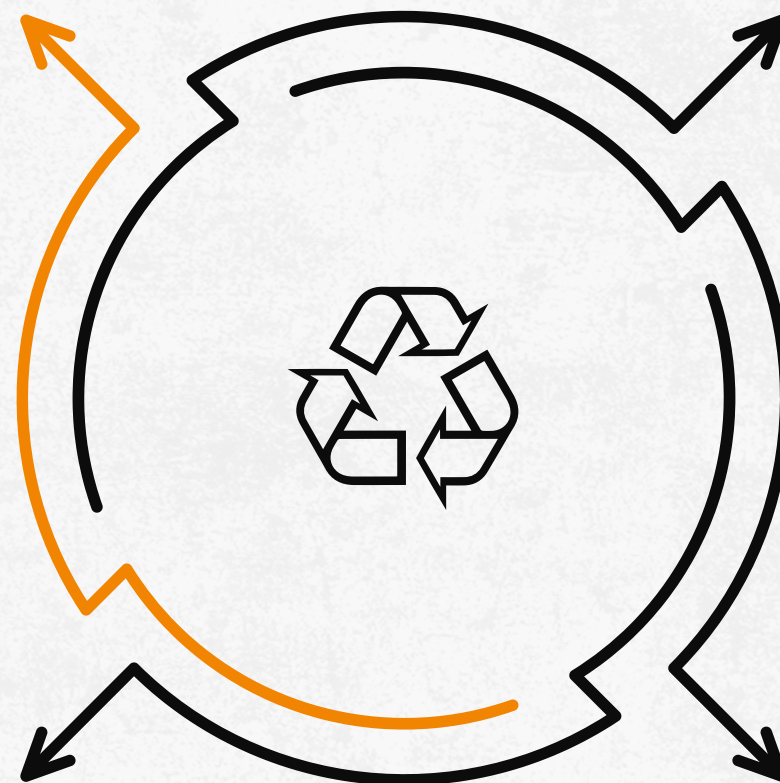
CSR, Corporate Social Responsibility

Implementation Costs

Covering training, logistics, and staffing needs across all program locations.

Monitoring & Evaluation

Funding for data collection, analysis, and reporting to track impact and progress.



Outreach & Engagement

Budget for campaigns, stakeholder meetings, and public awareness initiatives.

Total Allocation

Estimated annual budget of IDR 1 billion to support comprehensive program delivery.



Thank You

See You Next Time

e-Mail: csr@greatcareinternational.com

[@GreatCareInternational](#)

www.greatcareinternational.com

